



Annual System Health Checks

FUEL SUPPLY SYSTEMS: LIFECYCLE SERVICES

Ensuring continuity of your operations

We are committed to ensuring the peak efficiency of your Auramarine system throughout its lifetime. Every aspect of a ship's fuel supply and auxiliary system is crucial for maximising its operational efficiency and on-going system health.

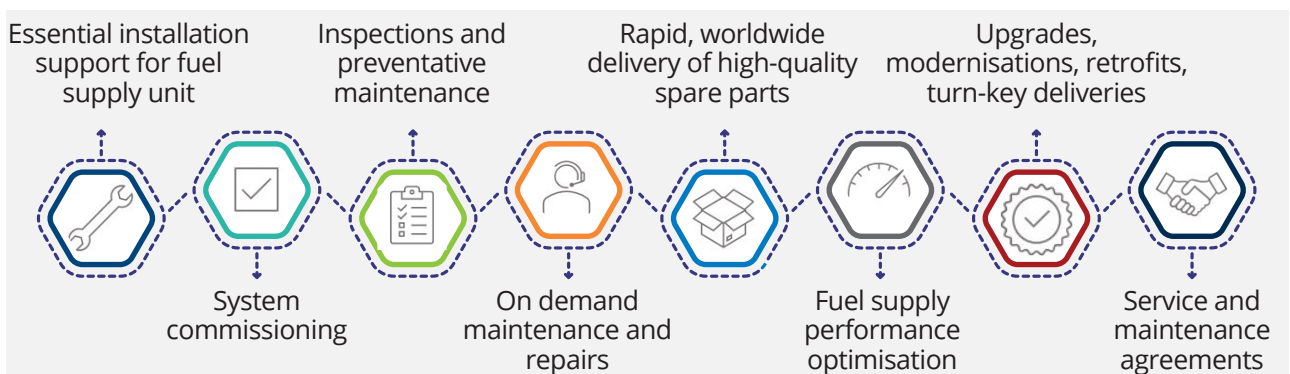
Diligent planning and preparation help maintain your operational risks and costs at the lowest possible levels. It also ensures that your fuel and auxiliary systems consistently meet their intended requirements within pre-defined operating conditions.

In general, health checks can be conducted during a port stay or at a shipyard, such as planned docking. Some inspections require the fuel supply unit to be run during the inspection. See more details below:

Inspection item	At sea	In port	At shipyard
Visual inspection	✓	✓	✓
Control cabinets, electrical connections and cables	✓	✓	✓
Booster/Feeder pumps visual inspection	✓ (*)	✓	✓
Filter visual inspection and functionality	✓	✓	✓
Valves functionality		✓ (*)	✓
Heaters/coolers, electrical heater functionality		✓	✓
Temperature regulator valve		✓	✓
Flowmeter and viscometer	✓	✓	✓
Emergency pump		✓	✓
System functionality		✓	✓
Software update		✓	✓
Health check report with recommendations, including spare part and service offer (if needed).	✓	✓	✓

(*) in some cases not possible when unit operation is needed

For proper planning and spare part availability, please contact Auramarine at an early stage before the anticipated port call or docking. See contact details on the back page.



Scope



1. **Leakages and mechanical damage visual inspections;** to detect the potential occurrence of leakages and mechanical damage.
2. **Control cabinets, electrical connections/ cables inspections;** to examine connections and cable condition of the cabinet(s) and electrical devices.
3. **Booster/Feeder pumps visual inspection;** to perform a pump examination visually and based on running hours. Perform a pump overhaul based on a customer's request.
4. **Automatic Filter/Filter visual inspection and functionality check;** to verify filters and assess their overall condition.
5. **Valves functionality test;** to evaluate valves usability and proper functioning.
6. **Heaters/coolers functionality check and electrical heater inspection;** to ensure that the heater/cooler is operating properly.
7. **Temperature regulator valve functionality check;** to verify that the temperature regulation is operating correctly.
8. **Flowmeter and Viscometer functionality and accuracy test;** to ensure the proper functioning of the flowmeter and viscometer.
9. **Emergency pump functionality test;** to examine the emergency pump and ensure it is working correctly and in a timely manner.
10. **System functionality test;** an overall evaluation of the system's performance to ensure it is safely operating as intended.
11. **Software update.** If available for the unit's control, updates can be downloaded during the health check inspection visit.
12. **Health check report with recommendations, in conjunction with optional spare part and service proposal (if needed).**

Service and maintenance agreements

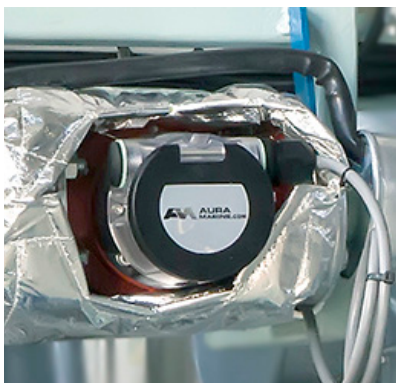
Understanding fleet-wide and asset-specific requirements - considering the asset's age, equipment and deployment - is beneficial when structuring intelligent spare components sourcing and regular equipment monitoring regimes.

For operators with multiple Auramarine systems installed within their fleet, we provide numerous benefits, such as specially discounted and readily stocked volumes of spare components, exclusive service engineer assistance, planned and condition-based maintenance programs, and preferential access to units for upgrades.

Spares for fast delivery

At Auramarine, we acknowledge the significance of essential fuel supply system components for the uninterrupted flow of operations. We are also aware of the often prolonged times for the delivery of many of these components. Therefore, we have now increased our stock of selected flow meters, fuel pumps, viscometers and basic components to ensure rapid delivery for those operating assets out at sea. We also have the capability to deliver specific components for third-party equipment. In certain cases, such installations might require specialised adapters or modification kits. Contact us for further details.

Flowmeters



Useful specifications:

- Serial number of your fuel supply unit (if Auramarine)
- The type of your current flow meter given on the part
- The item code on the fuel supply unit part list
- The required flow rate for the new flowmeter

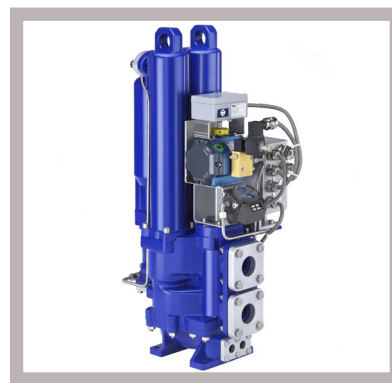
Fuel pumps



Useful specifications:

- Auramarine product code from item list
- Product information from nameplate or serial number of the fuel supply unit
- Flow rate

Filters



Useful specifications:

- Auramarine product code from item list
- Product information from nameplate or serial number of the fuel supply unit

ID 806035

Viscometers

Contact us to verify the compatibility. A standard viscometer delivery consists of:

- Auramarine's viscometer control box with cable
- Adapter kit
- Electric accessories and cabling if required
- Initial review and design update



Get further information
or request a meeting:
after.sales@auramarine.com
or send an inquiry via [https://
www.auramarine.com/contact/](https://www.auramarine.com/contact/)



Auramarine Ltd.
after.sales@auramarine.com
www.auramarine.com

