

# Fuel pumps from stock

Applicable for marine and land based installations

## Fuel pumps now available with short delivery times directly from stock

A pump replacement should be considered in the event a fuel supply pump capacity needs to be increased or the current pump is worn out. It is important to invest in a new pump to ensure adequate pumping capacity and lubricity for main and auxiliary engines.

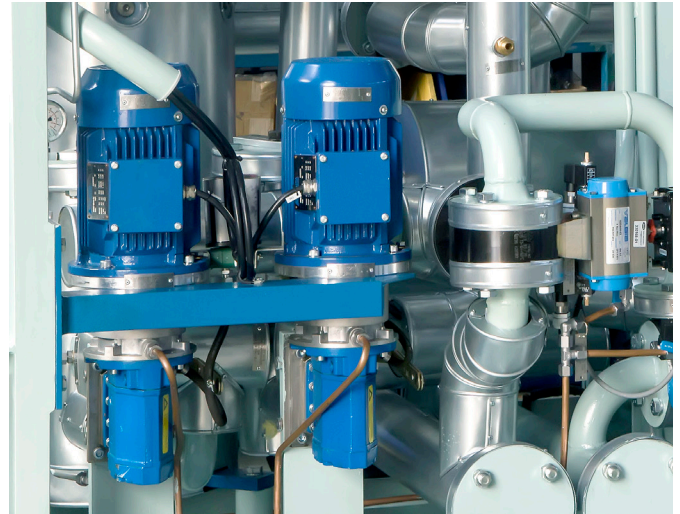
At Auramarine, we design our systems according to class requirements and necessary redundancy to ensure the continuation of smooth operations. However, in the instance that a pump breaks, delivery speed counts. We recognise that there can be long delays (typically 6-8 weeks) in the shipment time for fuel pumps and therefore we have now increased our stock of selected items to ensure rapid delivery.

Contact us with the below information for further details and to find the suitable pump for your system:

- Auramarine product code from item list
- Product information from name plate or serial number of the fuel supply unit
- Flow rate
- For third party equipment, contact us for more details

The pumps come with classification according to your specification – please provide information in your enquiry on the classification society you require. For land based installations, please request pumps without marine classification.

At Auramarine we also provide other services such as fitting, piping arrangements and engineering and installation services.



The following items are available directly from stock\*:

Item code	Pump type	Flow range depending on operating parameters
M000025	ACE025N3	0 - 44.2 l/min
M000026	ACE025L3	0 - 31.5 l/min
M000027	ACE032N3	0 - 94.6 l/min
M000028	ACE032L3	0 - 67.3 l/min
M000029	ACE038K3	0 - 128 l/min
M000030	ACE038N3	0 - 161 l/min
M000031	ACE038D3	0 - 184 l/min
M000050	ACG045K7	0 - 217 l/min
M000051	ACG045N7	0 - 271 l/min

\*subject to intermediate sales

## Additional services to support your fuel pump replacement

Our team of experts can help to find the best solution for your vessel or plant by reviewing your fuel supply system's capabilities and requirements.

We also offer engineering preview services as well as design, drawings, documentation and part list services for any new setup.

Please contact our experts to ensure you are selecting the best technical options for your modernisation or replacement needs.

## Contact us:

Contact Auramarine at [after.sales@auramarine.com](mailto:after.sales@auramarine.com) or visit [www.auramarine.com/Contact Us](http://www.auramarine.com/Contact Us) to speak to one of our experts and find the right parts to ensure the continuous healthy operation of your marine or land based assets.

For more information on Auramarine spare parts offering, visit [www.auramarine.com/lifecycle services/spares](http://www.auramarine.com/lifecycle services/spares).



Information in this publication is subject to change without notice. In case of any difference between the reference documents and the technical specification, the technical specification shall overrule. All documents supplied remain the property of Auramarine Ltd.

All rights reserved. No part of this document may be reproduced, stored, photocopied, recorded or transmitted without permission of the copyright owner.



**Auramarine Ltd.**  
[after.sales@auramarine.com](mailto:after.sales@auramarine.com)  
[www.auramarine.com](http://www.auramarine.com)

